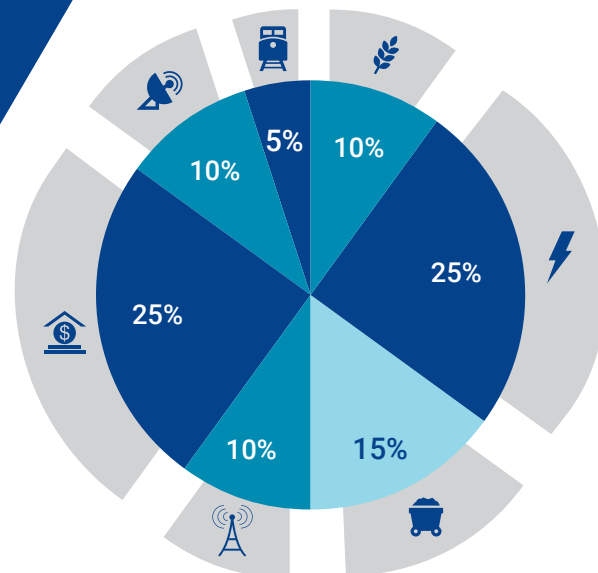




# Market Index Uniflex

## Main Product Features

- ▶ 6-year term (not redeemable before maturity)
- ▶ Guarantee of principal on maturity of 100%
- ▶ Low management fees of 1% per year
- ▶ \$500 minimum deposit
- ▶ An easy way to diversify
- ▶ Cut-off age: 64 y/o (registered) and 70 y/o (non-registered)
- ▶ Even under a scenario where the return of each share is negative, this product may produce a global positive return



**Sector diversification of the Market Index Uniflex**

## How it works

On the settlement date, a starting level will be determined for each Canadian share included in the portfolio.

On the maturity date, a ratio of the closing level over the starting level for each share will be computed.

The 8 best performing shares during the 6-year term will be automatically assigned a fixed return of 60%, regardless of whether the actual return was positive or negative. The remaining 12 shares will be assigned their actual return. The global return (maximum 60%) will be calculated by averaging these 20 returns.

The value at maturity will be the highest value between:

- ▶ the initial deposit; or
- ▶ the initial deposit **PLUS** global return (maximum 60%)

## Exposure to 20 Canadian companies included in the S&P/TSX 60 Index

| Company   | Sector                     | Company  | Sector                 |
|---|----------------------------|--|------------------------|
| Metro Inc.<br>Loblaw Companies Limited  | Consumer staples           | Scotiabank<br>The Toronto-Dominion Bank<br>Royal Bank of Canada<br>Bank of Montreal<br>Sun Life Financial Inc. | Financial services     |
| Enbridge Inc.<br>TransCanada Corporation<br>Cenovus Energy Inc.<br>Canadian Natural Resources Limited<br>Suncor Energy Inc. | Energy                     | Canadian National Railway Company  | Industrials            |
| Nutrien Ltd.<br>Teck Resources Limited, Class B<br>Barrick Gold Corporation   | Materials                  | Shaw Communications Inc., Class B<br>Thomson Reuters Corporation   | Consumer discretionary |
| BCE Inc.<br>TELUS Corporation   | Telecommunication services |  |                        |

# Examples

These hypothetical examples are included for illustrative purposes only. They should not be construed as forecasts or projections. In other words, there is no assurance that the results shown will be achieved.

## Example 1 Shares with positive performances

### Company

|                                    |
|------------------------------------|
| Nutrien Ltd.                       |
| Enbridge Inc.                      |
| BCE Inc.                           |
| Canadian National Railway Company  |
| TransCanada Corporation            |
| Shaw Communications Inc., Class B  |
| Scotiabank                         |
| The Toronto-Dominion Bank          |
| TELUS Corporation                  |
| Royal Bank of Canada               |
| Bank of Montreal                   |
| Metro Inc.                         |
| Barrick Gold Corporation           |
| Thomson Reuters Corporation        |
| Cenovus Energy Inc.                |
| Teck Resources Limited, Class B    |
| Canadian Natural Resources Limited |
| Suncor Energy Inc.                 |
| Loblaw Companies Limited           |
| Sun Life Financial Inc.            |

| Share Return (%) | Share Return Used (%) |
|------------------|-----------------------|
| 105.36           | 60.00                 |
| 94.54            | 60.00                 |
| 91.85            | 60.00                 |
| 89.63            | 60.00                 |
| 85.74            | 60.00                 |
| 85.11            | 60.00                 |
| 83.58            | 60.00                 |
| 78.45            | 60.00                 |
| 76.87            | 76.87                 |
| 74.65            | 74.65                 |
| 71.68            | 71.68                 |
| 68.74            | 68.74                 |
| 65.19            | 65.19                 |
| 61.39            | 61.39                 |
| 45.18            | 45.18                 |
| 40.18            | 40.18                 |
| 35.77            | 35.77                 |
| 27.24            | 27.24                 |
| 10.68            | 10.68                 |
| 6.00             | 6.00                  |

Arithmetic average of the 20 returns = 53.18%  
 Global gross return = Min (53.18% ; 60.00%) = 53.18%  
 Gross annual return = 7.37%  
 Net annual return = 6.37%

## Example 2 Shares with negative performances

| Share Return (%) | Share Return Used (%) |
|------------------|-----------------------|
| -0.97            | 60.00                 |
| -1.26            | 60.00                 |
| -2.15            | 60.00                 |
| -2.92            | 60.00                 |
| -3.46            | 60.00                 |
| -3.71            | 60.00                 |
| -4.05            | 60.00                 |
| -5.63            | 60.00                 |
| -6.97            | -6.97                 |
| -8.51            | -8.51                 |
| -9.10            | -9.10                 |
| -10.28           | -10.28                |
| -11.47           | -11.47                |
| -14.89           | -14.89                |
| -15.45           | -15.45                |
| -17.11           | -17.11                |
| -19.62           | -19.62                |
| -22.53           | -22.53                |
| -23.74           | -23.74                |
| -25.14           | -25.14                |

Arithmetic average of the 20 returns = 14.76%  
 Global gross return = Min (14.76% ; 60.00%) = 14.76%  
 Gross annual return = 2.32%  
 Net annual return = 1.32%

## Example 3 Shares with zero performances

### Company

|                                    |
|------------------------------------|
| Nutrien Ltd.                       |
| Enbridge Inc.                      |
| BCE Inc.                           |
| Canadian National Railway Company  |
| TransCanada Corporation            |
| Shaw Communications Inc., Class B  |
| Scotiabank                         |
| The Toronto-Dominion Bank          |
| TELUS Corporation                  |
| Royal Bank of Canada               |
| Bank of Montreal                   |
| Metro Inc.                         |
| Barrick Gold Corporation           |
| Thomson Reuters Corporation        |
| Cenovus Energy Inc.                |
| Teck Resources Limited, Class B    |
| Canadian Natural Resources Limited |
| Suncor Energy Inc.                 |
| Loblaw Companies Limited           |
| Sun Life Financial Inc.            |

| Share Return (%) | Share Return Used (%) |
|------------------|-----------------------|
| 00.00            | 60.00                 |
| 00.00            | 60.00                 |
| 00.00            | 60.00                 |
| 00.00            | 60.00                 |
| 00.00            | 60.00                 |
| 00.00            | 60.00                 |
| 00.00            | 60.00                 |
| 00.00            | 60.00                 |
| 00.00            | 00.00                 |
| 00.00            | 00.00                 |
| 00.00            | 00.00                 |
| 00.00            | 00.00                 |
| 00.00            | 00.00                 |
| 00.00            | 00.00                 |
| 00.00            | 00.00                 |
| 00.00            | 00.00                 |
| 00.00            | 00.00                 |
| 00.00            | 00.00                 |
| 00.00            | 00.00                 |
| 00.00            | 00.00                 |
| 00.00            | 00.00                 |

Arithmetic average of the 20 returns = 24.00%  
 Global gross return = Min (24.00% ; 60.00%) = 24.00%  
 Gross annual return = 3.65%  
 Net annual return = 2.65%

## Example 4 Market crash = return of principal

| Share Return (%) | Share Return Used (%) |
|------------------|-----------------------|
| -40.00           | 60.00                 |
| -40.00           | 60.00                 |
| -40.00           | 60.00                 |
| -40.00           | 60.00                 |
| -40.00           | 60.00                 |
| -40.00           | 60.00                 |
| -40.00           | 60.00                 |
| -40.00           | 60.00                 |
| -40.00           | 60.00                 |
| -40.00           | 60.00                 |
| -40.00           | 60.00                 |
| -40.00           | 60.00                 |
| -40.00           | 60.00                 |
| -40.00           | 60.00                 |
| -40.00           | 60.00                 |
| -40.00           | 60.00                 |
| -40.00           | 60.00                 |
| -40.00           | 60.00                 |
| -40.00           | 60.00                 |
| -40.00           | 60.00                 |

Arithmetic average of the 20 returns = 00.00%  
 Global gross return = Min (00.00% ; 60.00%) = 00.00%  
 Gross annual return = 00.00%  
 Net annual return = 00.00%  
 RETURN OF PRINCIPAL